

SPECIFICATIONS

Interior - Freezer/Chill Room
Vinyl NSF gasket (1/16" joint thickness), Cam-lock layout SN:

SPECIAL INSTRUCTIONS
No wood construction
Export crating
BISA

WALL PANELS
Construction: 4" urethane
Exterior Finish: Stucco white galvalume
Interior Finish: Stucco white galvalume
Coiling connections: Camlock
Floor connections: Camlock

CEILING PANELS
Construction: 4" high density urethane
Exterior Finish: Metal
Interior Finish: Stucco white galvalume
Coiling Cabs: Factory mounted
Live Load: 10 psf

FLOOR PANELS
Model: Hand-Truck Floor panels model WHTN (NSF)

Construction: 3 1/2" high density urethane
w/ .080 smooth aluminum @ Interior
w/ Metal @ exterior

DOORS

[A]: 36" x 78" non-PVC flush self-closing freezer door

Brand: Imperial Brown

Frame: 4" high density urethane, 3-sided
w/ Stucco white galvalume both sides

w/ Stucco white galvalume liners
w/ 4-sided heat cable in frame (FL-4-114M)

Leaf: 4" thick, 3-sided lap, standard hinge
w/ Stucco white galvalume both sides
w/ Magnetic gasket

(3) Component Hardware MS9 spring assisted adjustable hinge

(1) Kason #487 rolling panel latch (no lock)

(1) Kason #109k hydraulic door closer (polished chrome)

(2) 3-way press switch w/ pilot light (weatherproof, 120V 4.5A max. load)

(1) Kason 1832 heated air vent (25W, 120V, .2A)

(1) .080 smooth aluminum threshold

36" high w/ .080 aluminum diamond tread kickplates (leaf, ext. & int.)

*** LEAF NOT RAISED FOR FLOORING ***

Brand: Imperial Brown

Frame: w/ Stucco white galvalume, 3-sided
w/ Stucco white galvalume both sides

Leaf: 4" thick, 3-sided lap, standard height
w/ Stucco white galvalume both sides
w/ Magnetic gasket

w/ heated heat cable in plug + heated sweep
(19'-3" x 2.5 w/ft self-regulated heat wire - 120V, 0.5A max.)

(3) Component Hardware MS9 spring assisted adjustable hinge

(1) Kason #487 rolling panel latch (no lock)

(1) Kason #109k hydraulic door closer (polished chrome)

(2) 3-way press switch w/ pilot light (weatherproof, 120V 4.5A max. load)

(1) Kason 1832 heated air vent (25W, 120V, .2A)

(1) .080 smooth aluminum threshold

36" high w/ .080 aluminum diamond tread kickplates (leaf, ext. & int.)

PARTS

[B]: ea. Kason #1809 vapor proof LED light fixture (29W, 120V, 0.25A) - (LED lamp built-in.)

(2) tube Buyla caulking (white)

Finish: 31.6" aluminum diamond tread
(Ramp has no toe and sits at same level as floor panels, unless otherwise specified here)

(38.34) 1". External roof support (galvanized or powder coated)-(2) runs 21' |1

Component w/ beam spreaders

 NSF LABEL
K.E.F. LIMITED (IMP.)
CHENNAI K.S.F. SUBER @ ALL PANEL JOINTS

THE MATERIALS SHOWN ARE BASED ON NSF STANDARD #7, SECTION 5, PARAGRAPHS 5.30.7, REQUIREMENTS (REF. TABLE 1). THESE NUMBERS ARE NOT INTENDED TO BE USED FOR SIZING OR SPECIFICATION FOR THIS MATERIAL. THE MANUFACTURER'S RECOMMENDATION WITH A QUALIFIED ENGINEER OR REPRESENTATIVE COMPANY.



NOTES

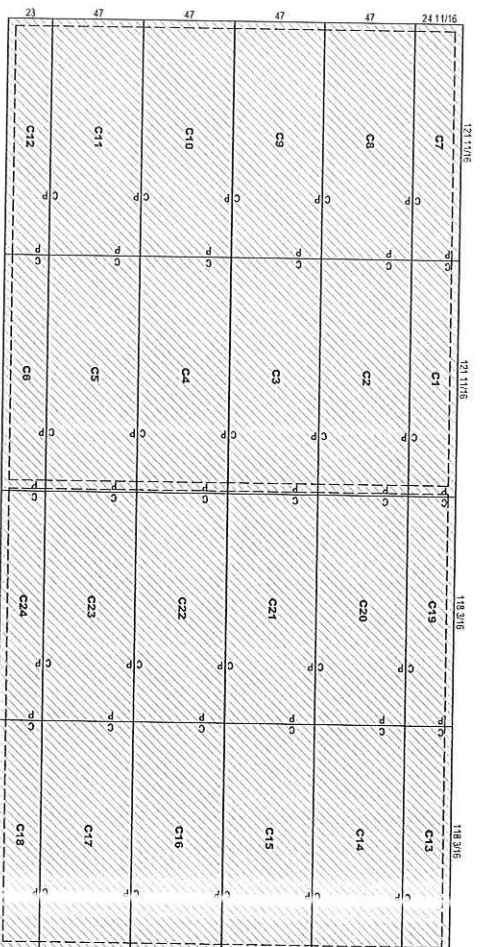
STANDARD NOTES
To prevent condensation, a minimum 2" from the walk-in exterior surface is required. High humidity conditions may require force ventilation in addition to clearance.
Installation site floor must be true and level within 3/16" per 10' or additional costs may be incurred.

R-Plus Doors sliding and vertical lift doors shall not be considered means of egress. Check code egress requirements for your application.
ELECTRICAL
Field electrician to verify maximum acceptable load for light switches. If load is too high, then relay type controls should be used.
After wiring devices, ALL conduits must be sealed to stop moisture transfer from ceiling downways.
Failure to seal devices per NEC codes WILL VOID WARRANTY.

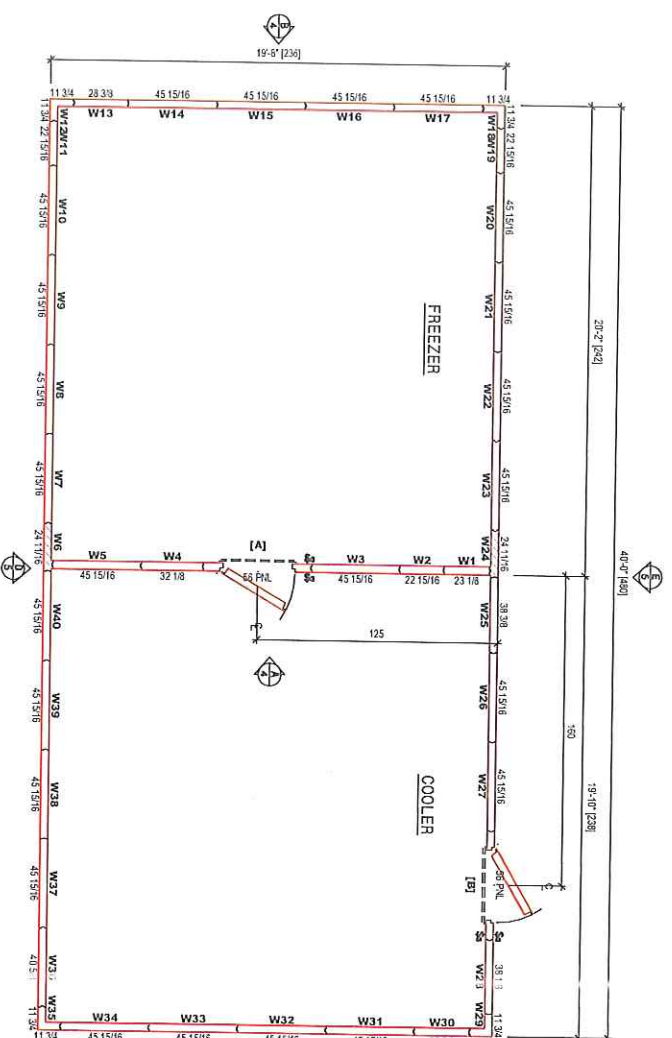
REVISIONS

- PRELIMINARY DRAWING -

Customer Note: This is a preliminary drawing only. Approving this drawing only certifies that you agree with overall dimensions and door and opening locations. Final dimensions may vary up to a 1/8" smaller than shown herein. Actual dimensions will be shown on subsequent complementary drawings. Should discrepancies be found between drawing and sales order, customer may be asked to approve standard technical drawings.
Customer Note: The manufacturer is being responsible for overall size and fit around building walls, columns and ceiling restrictions, door locations, openings for equipment supplied by others.
 APPROVED FOR FABRICATION WITH NO CHANGES
 REVERSE AND RESUBMIT
Signature: _____



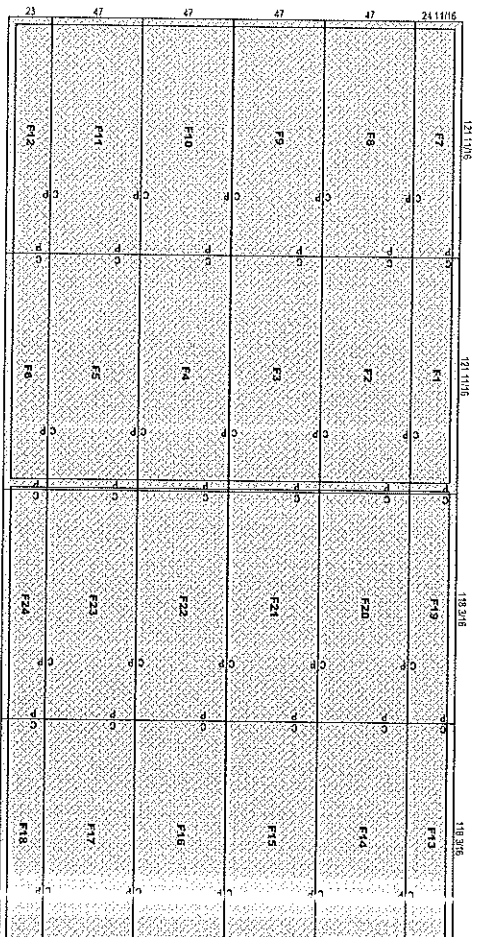
CEILING PANELS



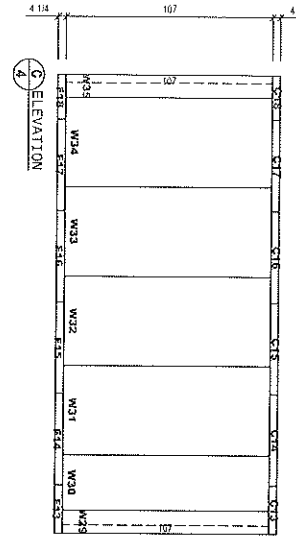
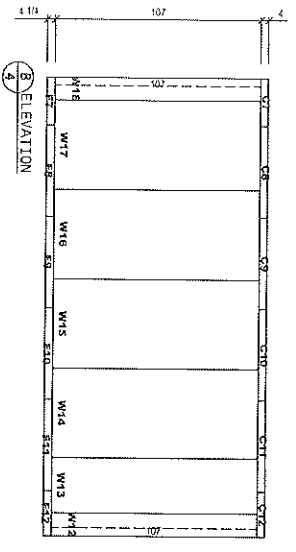
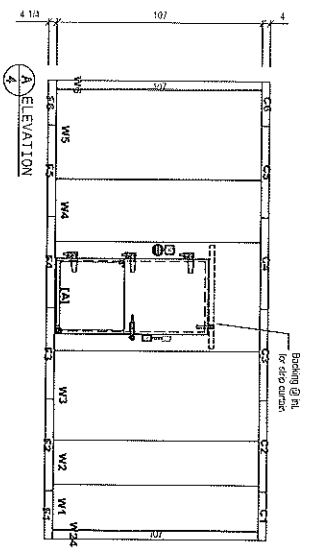
WALL PANELS

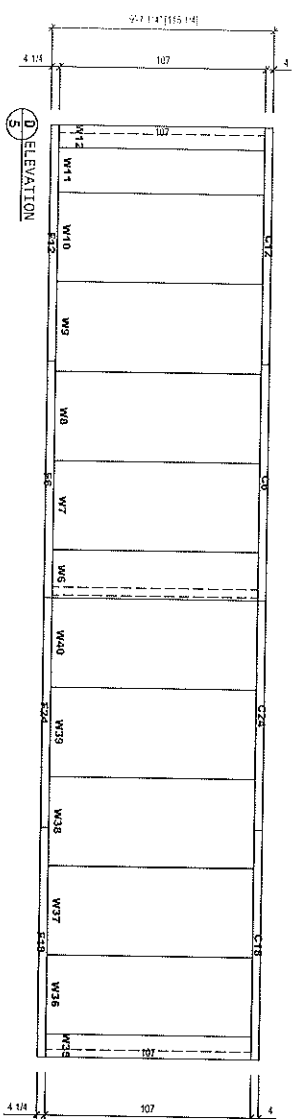
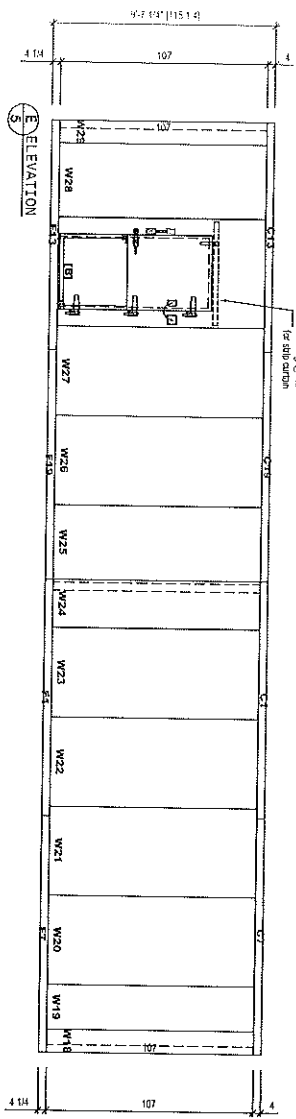
Stucco white on alumina

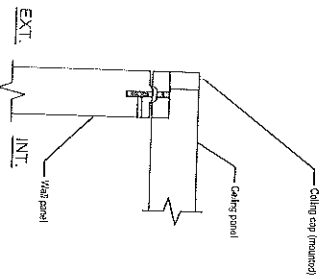
- CONSTRUCTION LEGEND:
- 4" urethane
 - 4" high density urethane
 - 3 1/2" high density urethane



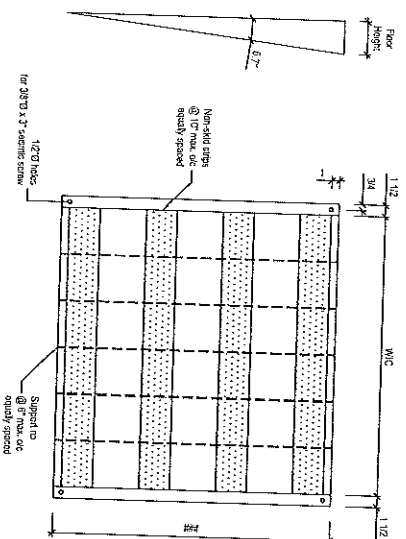
FLOOR PANELS



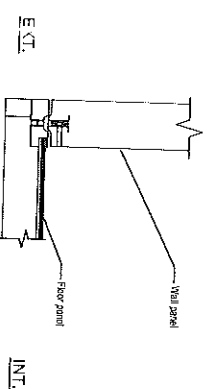




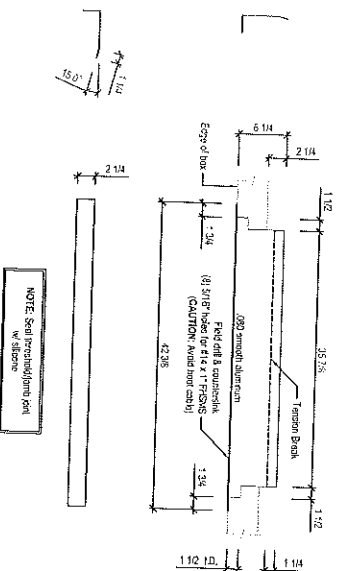
1 CEILING CONNECTION



2 EXTERIOR RAMP, MODEL 750E



3 FLOOR CONNECTION



NOTE: Seal perpendicular joint w/ Silicone

4 THRESHOLD FOR SWING DOOR
8 FLUSH 100-110, Panel Frame, Angle