

**INSTALLATION REQUIREMENTS**

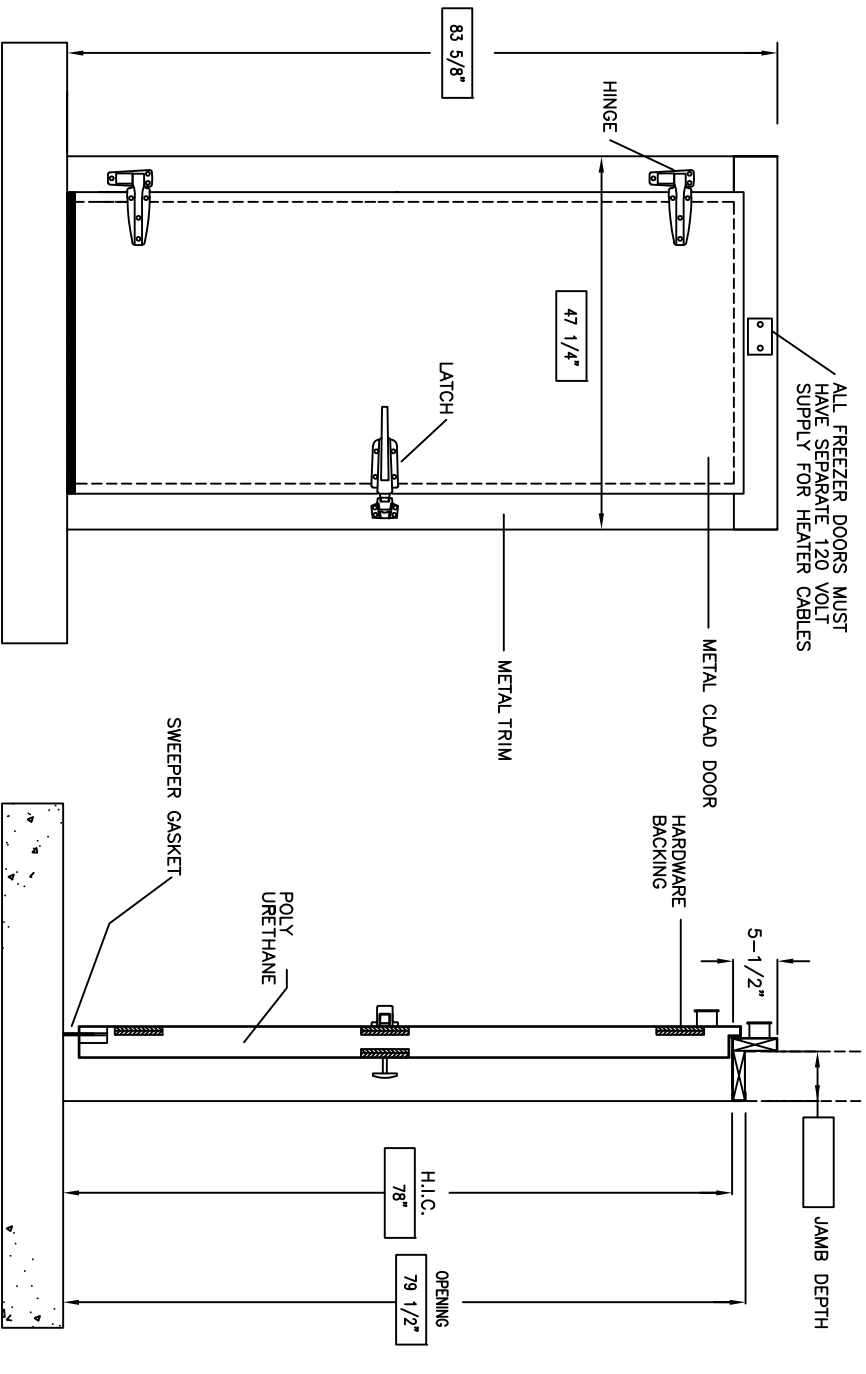
- I. THE FLOOR UNDER THE DOOR MUST BE LEVEL AND SMOOTH
- II. THE WALL BEHIND THE DOOR FRAME MUST BE SMOOTH AND IN A COMMON PLANE

**DOOR PANEL AND FRAME**

1. DOOR THICKNESS <sup>4</sup>
  2. TEMPERATURES  
COOLER   
FREEZER
  3. SWING  
LEFT   
RIGHT
  4. PANEL AND FRAME CLADDING  
WHITE STUCCO EMBOSSED GALV STEEL
  5. LATCH  
PADLOCKABLE   
CHROME FINISH
  6. INTERIOR RELEASE  
SAFETY RELEASE W/ NYLON PUSH ROD
  7. HINGE  
CHROME FINISH
  8. FASTENERS  
THROUGH BOLTS
  9. JAMBS  
JAMB DEPTH 3 1/2"   
JAMB DEPTH 5 1/2"
- OPTIONS**
10. INSIDE PLASTIC TRIM
  11. FREEZER DOOR HEATER WIRE RUN THROUGH 3 SIDES OF DOOR FRAME AS WELL AS THRESHOLD

**3' X 6'-6" DOOR**

NOTE: LEFT SWING SHOWN, RIGHT SWING OPPOSITE



**920-231-1711**  
**WWW.BARRINC.COM**  
**WALK-IN COOLER OR**  
**FREEZER DOOR**