

**New** and replacement  
**cold** storage doors for

- Walk-In Manufacturers
- Cold Storage Contractors
- Distribution Centers
- Food Processing Plants
- Mass Merchants
- Supermarkets
- Convenience Stores
- Restaurants
- Colleges
- Universities
- Hotels
- Resorts and Casinos
- Institutional Food Service
- Military Commissaries
- Industrial Facilities
- Laboratories
- Stadiums



# Bi-Parting Doors



BIPARTING  
FLOOR GUIDE



BIPARTING  
WALL GUIDE

The New **American** Standard  
for Sliding Cold Storage Doors



# Bi-Parting Sliding Door

EFD-BPHMS / EFD-BPHES

Insulated, Bi-Parting  
Cold Storage Door

The **Bi-Parting Slide** is a perfect fit for all types of cold storage coolers, freezers, warehouse and distribution centers when space is limited in back rooms, aisles or when excessive in-and-out traffic is expected. Bi-Parting doors are especially useful in areas where forklift traffic is expected.

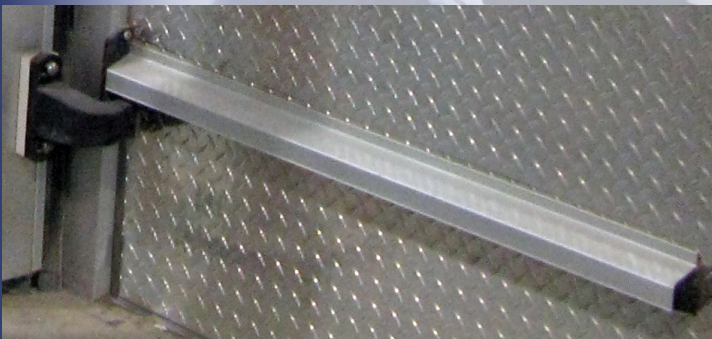
The Bi-Parting door's "down-and-in" motion completely seals the perimeter between the panel, casing frame, and floor. The panel sub-frame is extruded from aircraft grade aluminum and is reinforced by steel corner brackets for increased panel integrity. Clad with USDA approved face sheets, back-up blocking is used at all handle and lock attachment points. The panel structure is foamed-in-place with at least 4" of polyurethane insulation. All freezer doors are equipped with a full perimeter heater cable in both the door panel and casings.

- Manual or automated operation
- Visually pleasing
- Closed hood design
- Large diameter wheels
- "Down and in" motion for a tight seal
- Heavy-duty extruded aluminum sub-frame
- Steel corner reinforcements
- Foamed-in-place insulation
- Bottom guide system eliminates stay rollers
- Polycarbonate snubber with steel catch-hook
- Adjustable bottom sweep



## WALL GUIDE AVAILABLE

Eliminate tripping hazards with an exclusive Frank Door Wall Guide system.



# Smooth “Down-and-in” motion to seal

The unique design of the DropTrac system guides its door “down-and-in” to seal the perimeter.

[CLICK FOR ANIMATION](#)



[CLICK FOR ANIMATION](#)



[CLICK FOR ANIMATION](#)



(Amount of lift increased for diagrammatic effect)

## Panel

- Aircraft grade aluminum sub frame
- Steel corner reinforcement brackets
- 24 gauge metal or .040 embossed aluminum cladding
- Foamed-in-place polyurethane insulation

## Gaskets

- Dual blade panel-mounted replaceable gaskets

## Track System

- DropTrac with integrated hood
- Large diameter wheels with stainless steel bushings and bearings
- Bottom door guidance system
- Leading edge snubber and capture hook
- Insulated, extruded aluminum casings and header

## Hardware

- Exterior and recessed interior pull handles
- Corrosion resistant materials and finishes



# Features

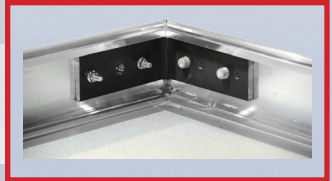
## Heavy-Duty DropTrac System

Uses two angled trolleys with down-and-in motion for smooth operation and a tight seal.



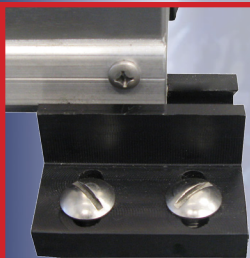
## Panel Extrusion

Aircraft-grade aluminum sub-frame coupled with steel corner brackets at panel hanger points



## Sliding Floor Guide System

Hidden beneath the panel, eliminating the need for traditional rust and damage-prone stay rollers.



## Non-Corrosive SS & Polymer Handles

All handles are durable, weather-resistant, and designed to last.



# Bi-Parting Door Catalog

Over 25 years of  
quality craftsmanship  
with service and support  
*you can count on.*



## The New **American** Standard for Sliding Cold Storage Doors

As the Frank Door Company constantly strives to build the highest quality products for performance and value, the design, specifications, materials, features and prices are subject to change without notice.



413 Howard Blvd., Newport, North Carolina USA 28570  
[www.frankdoor.com](http://www.frankdoor.com)