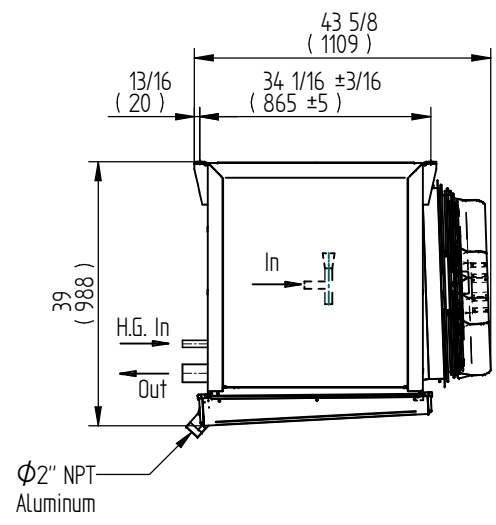
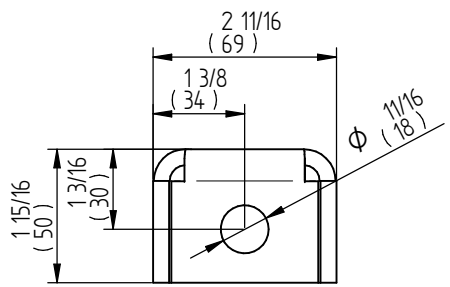
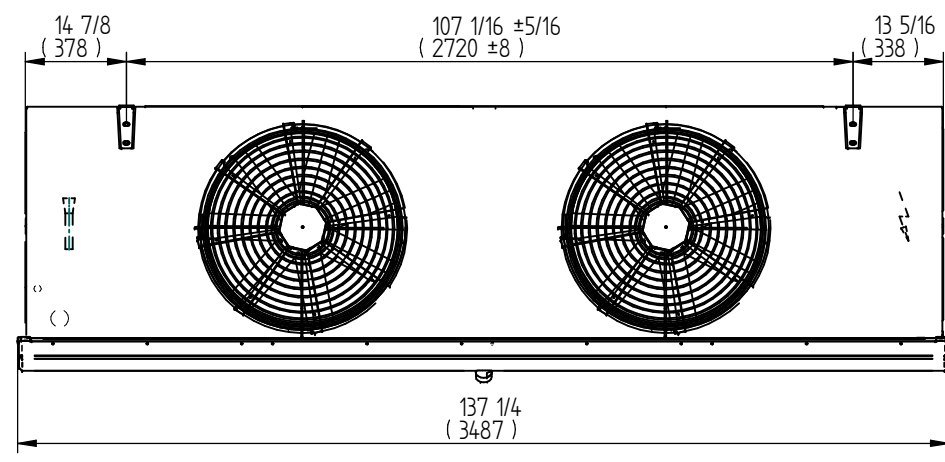


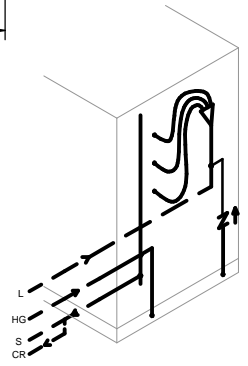
IT ONLY APPLIES
 FOR THIS PROJECT 508974
 REV: 00
 RELEASED: 12/04/2013
 DATE: 12/04/2013
 Only for Guntner production



A.D.



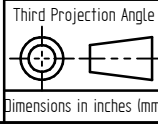
Hanger detail



— Factory pipe
 - - - Suggested field piping
 Schematic piping arrangement (for customer only)

Performance Data		Physical Data	
Capacity (Btu/h)	:145,560	Coil	:N/08/18/7.0/2720/A/R/S
Temp. Room	:-10.0 F	Surface area	:2,979 ft ²
R.H.	:95 %	Coil volume	:2.601 ft ³
ΔT	:10 F	Rows deep	:8
Refrigerant	:R22	Dry Weight/Op. Weight	:1,000 lb / 1,769 lb ca.
Superheating	:5.0 F	Connection side	:2x Right & 2x Le ft in air direction
Air Flow	:12,913 cfm	Defrost	:Hot gas in coil and tray
Air Pressure	:14.692	Inlet Ø	:1 1/8"
		Outlet Ø	:2 5/8"
		H.G. Inlet Ø	:7/8"
Fan/Motor Data		Fin spacing	:3.6 FPI
Voltage	:460/3/60	Casing Material:	:Galv. Steel
HP fan motor(s), (Qty.)	:3/4, (2)	Finish	:Powder coated signal white
RPM	:1,160	Tray material	:Aluminum
Design motor AMPS	:1.90	Tube material	:Copper
Fan Diameter	:27 15/16"	Fin material	:Aluminum
Type	:ZA		

Reference #:	300630333 / Cimco 4500567954	Project:	McClane Southern
Notes:	- Guntner Streamer (shipped loose)		
	- Hot gas defrost in tray		
	- Hot gas defrost in coil		
	- Hot gas interconnecting tubing with check valve		
	- Double tray with 13/16 in insulation		
Guntner U.S. Ref#:	202797		



Sc:	120	Customer:	FRICK
Pos:	10		
Qty:	4		
Model:	GHN 071.2H/27-HNL50.M		
Name:	Evaporator		
	Tag Right Units: AU-3; AU-4 & Tag Left Units: AU-21; AU-22		
Revision	Date	Name	Drawing.-Nr.:
	12.04.2013	smata	300-0000370006
	12.04.2013	rtapia	
			Revis.:
			PDM
Proj:	508974	Order:	115270

GÜNTNER
 Guntner U.S. L.L.C.
 110 W. Hillcrest Blvd. Ste. 105
 Schaumburg, IL 60195 USA.
 Ph.: (847)-781-0900
 www.guntnerus.com

protection note acc. to DIN ISO 16016

measures without specification of tolerances:
 welding / brazing: DIN EN ISO 13920, tolerance class D
 general tolerances: DIN ISO 2768-1, tolerance class component parts m / assembly v,
 general tolerances: DIN ISO 2768-1, tolerance class component parts K / assembly L,