

Notes:  
 Wall panels #47 & #48 above sliding door.  
 Wall panels #25, #44, #46 & #49 double stack. All corners double stack (1, 1A) (18, 18A) (26, 26A) (43, 43A). All top panels marked A.  
 Wall panels #45A, 45B above swinging door (34½" each).

Ceiling support: 5 beams, 14 poles

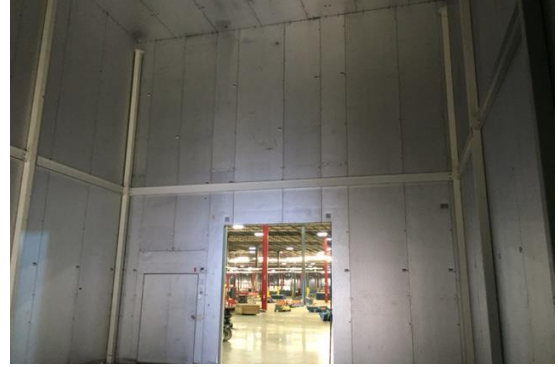
**26' x 63'4" x 26'7" H**  
**Cooler or Freezer**  
**Wall & Ceiling Panels Diagram**

**123-2016**  
**Color code: Brown**  
**Not drawn to scale.**



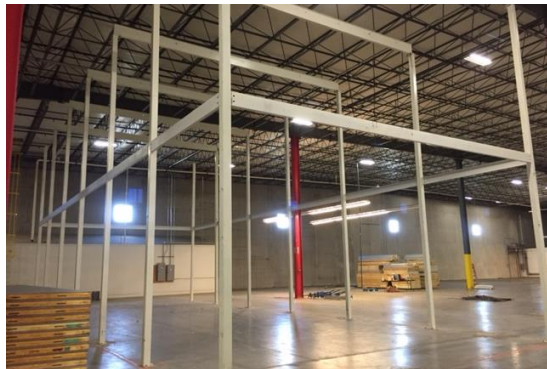
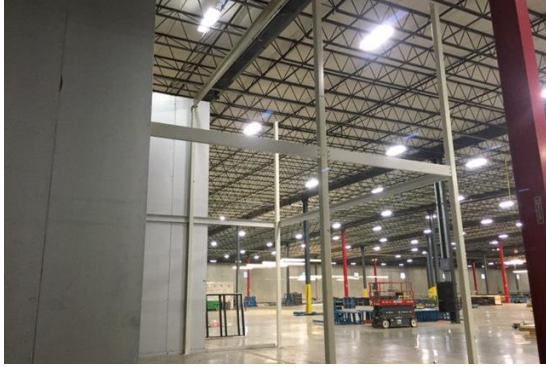
**26' x 63'4" x 26'7" H**  
**Cooler or Freezer**

**123-2016**  
**Color code: Brown**



**26' x 63'4" x 26'7" H**  
**Cooler or Freezer**

**123-2016**  
**Color code: Brown**



**26' x 63'4" x 26'7" H**  
**Cooler or Freezer**

**123-2016**  
**Color code: Brown**



**26' x 63'4" x 26'7" H**  
**Cooler or Freezer**

**123-2016**  
**Color code: Brown**