

INSTALLATION REQUIREMENTS

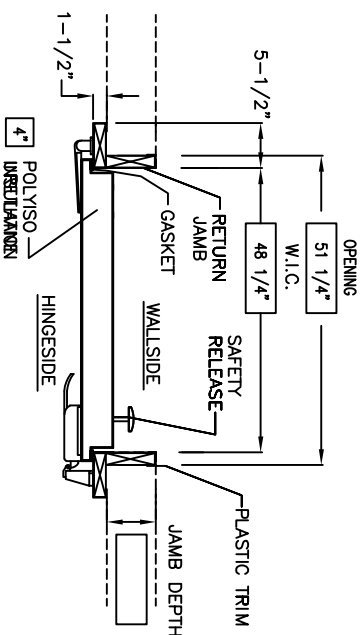
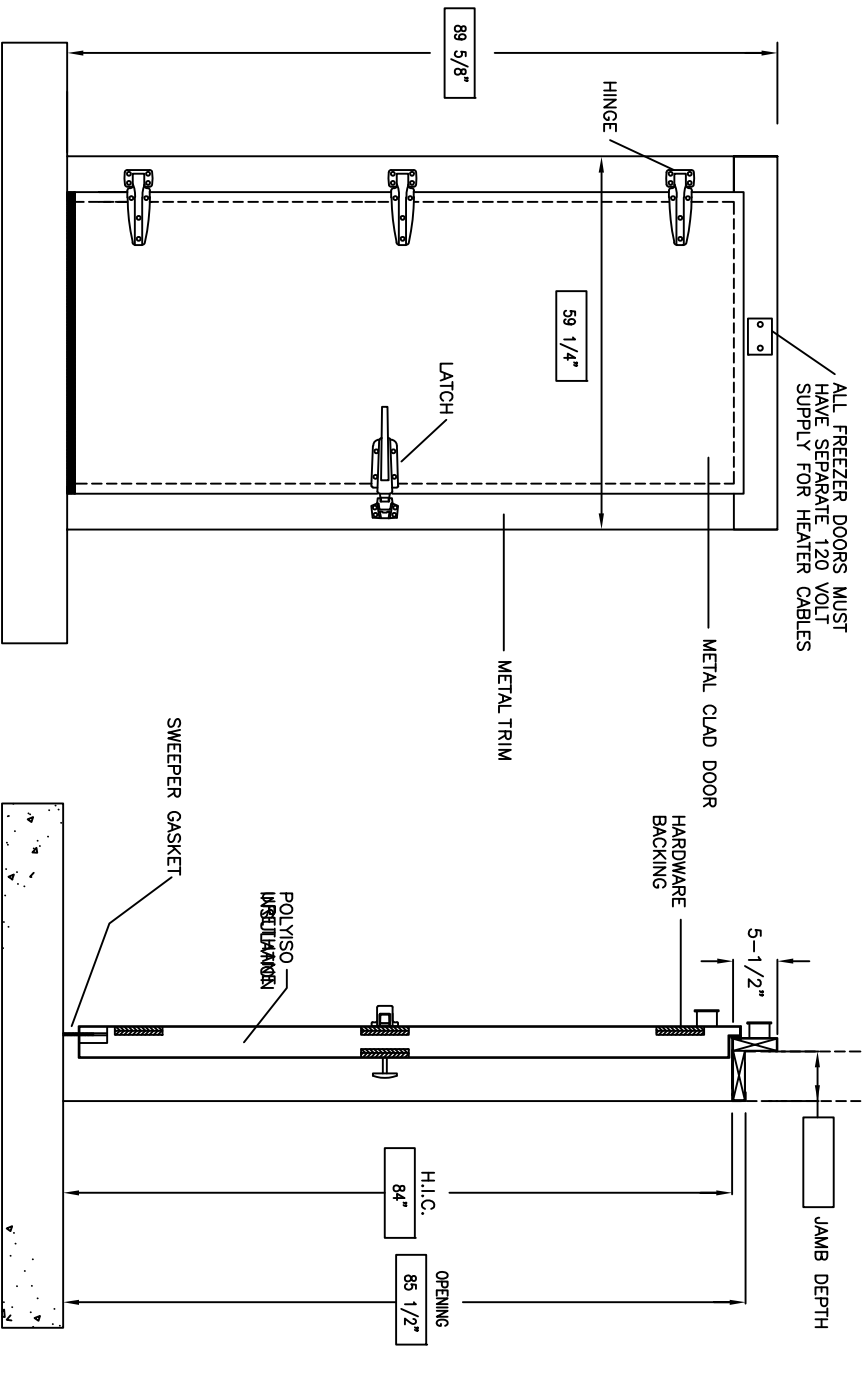
- I. THE FLOOR UNDER THE DOOR MUST BE LEVEL AND SMOOTH
- II. THE WALL BEHIND THE DOOR FRAME MUST BE SMOOTH AND IN A COMMON PLANE

DOOR PANEL AND FRAME

1. DOOR THICKNESS ^{4"}
 2. TEMPERATURES
 COOLER
 FREEZER
 3. SWING
 LEFT
 RIGHT
 4. PANEL AND FRAME CLADDING
 WHITE STUCCO EMBOSSED GALV STEEL
 5. LATCH
 PADLOCKABLE
 CHROME FINISH
 6. INTERIOR RELEASE
 SAFETY RELEASE W/ NYLON PUSH ROD
 7. HINGE
 CHROME FINISH
 8. FASTENERS
 THROUGH BOLTS
 9. JAMBS
 JAMB DEPTH 3 1/2"
 JAMB DEPTH 5 1/2"
- OPTIONS**
10. INSIDE PLASTIC TRIM
 11. FREEZER DOOR THROUGH 3 SIDES OF HEATER WIRE RUN WELL AS SIDES OF DOOR FRAME AS WELL AS THRESHOLD

4' X 7' DOOR

NOTE: LEFT SWING SHOWN, RIGHT SWING OPPOSITE



920-231-1711
WWW.BARRINC.COM
WALK-IN COOLER OR
FREEZER DOOR