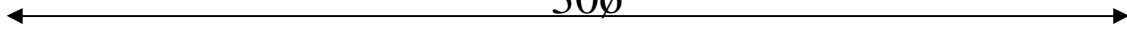
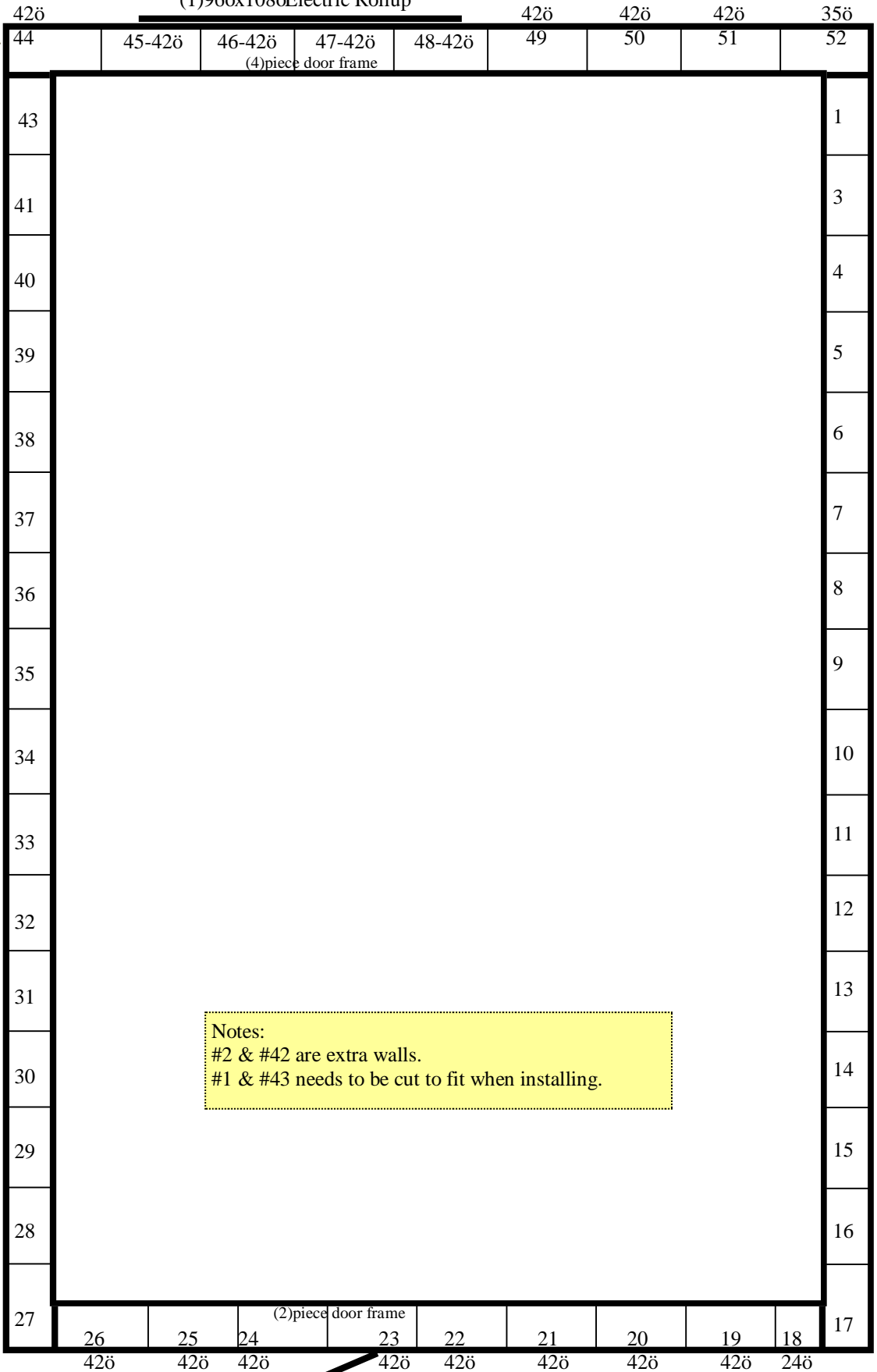




30ø



(1)96øx108øElectric Rollup



Notes:
 #2 & #42 are extra walls.
 #1 & #43 needs to be cut to fit when installing.

(1) 36øx84ø personnel door

**30' x 54'6" x 16'10" H
Cooler or Freezer
Wall Panels Diagram**

**148-14
No color
Not drawn to scale.**



30ø

(1)96øx108øElectric Rollup

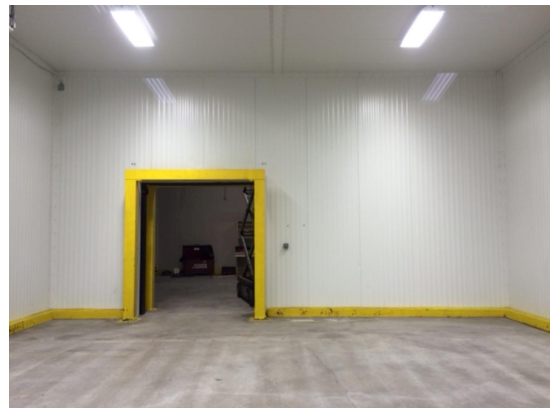
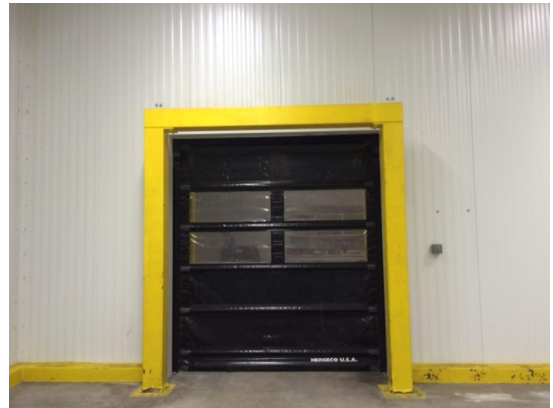
C32 42"x15'	C31 42"x15'
C30 42"x15'	C29 42"x15'
C28 42"x15'	C27 42"x15'
C26 42"x15'	C25 42"x15'
C24 42"x15'	C23 42"x15'
C22 42"x15'	C21 42"x15'
C20 42"x15'	C19 42"x15'
C18 42"x15'	C17 42"x15'
C16 42"x15'	C15 42"x15'
C14 42"x15'	C13 42"x15'
C12 42"x15'	C11 42"x15'
C10 42"x15'	C9 42"x15'
C8 42"x15'	C7 42"x15'
C6 42"x15'	C5 42"x15'
C4 42"x15'	C3 42"x15'
C2 23"x15'	C1 23"x15'

54ø6ö

(1) 36øx846 personnel door

30' x 54'6" x 16'10" H
Cooler or Freezer
Ceiling Panels Diagram

148-14
No color
Not drawn to scale.



**30' x 54'6" x 16'10" H
Cooler or Freezer**

**148-2014
No color**



**30' x 54'6" x 16'10" H
Cooler or Freezer**

**148-2014
No color**



30' x 54'6" x 16'10" H
Cooler or Freezer

148-2014
No color