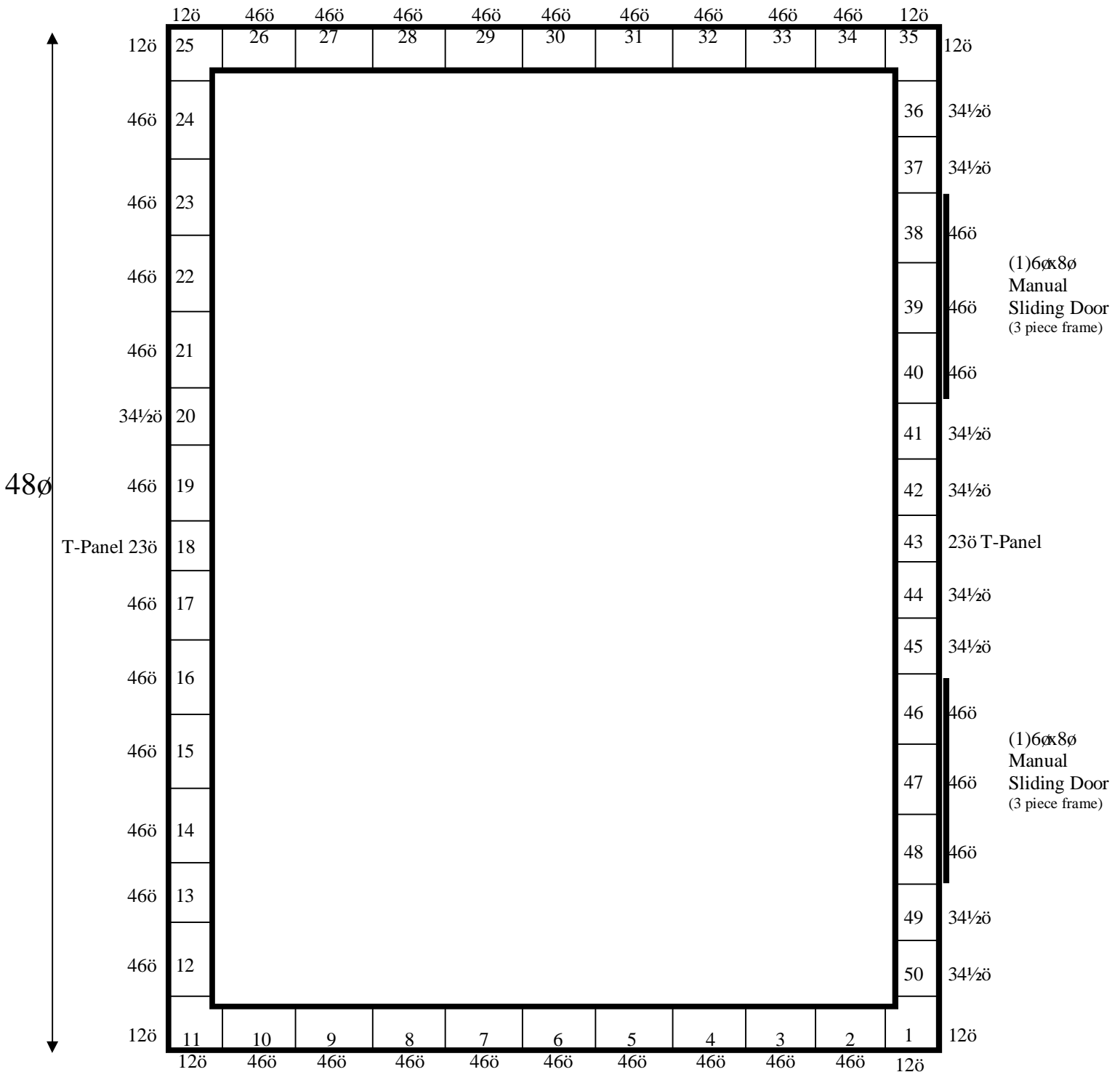




36øø



Notes:  
 Corners are double stacked labeled 1-1A, 11-11A, 25-25A, 35-35A (A goes on top).  
 T-Panels are double stacked 18-18A, 43-43A.

**36'6" x 48' x 18'2" H  
 Cooler or Freezer  
 Wall Panels Diagram**

**120-2014  
 Red  
 Not drawn to scale.**



36øø

C13 46½"x11'6½"	C26 46½"x13'5"	C39 46½"x11'6½"
C12 46"x11'6½"	C25 46"x13'5"	C38 46"x11'6½"
C11 46"x11'6½"	C24 46"x13'5"	C37 46"x11'6½"
C10 46"x11'6½"	C23 46"x13'5"	C36 46"x11'6½"
C9 34½"x11'6½"	C22 34½"x13'5"	C35 34½"x11'6½"
C8 46"x11'6½"	C21 46"x13'5"	C34 46"x11'6½"
C7 46"x11'6½"	C20 46"x13'5"	C33 46"x11'6½"
C6 46"x11'6½"	C19 46"x13'5"	C32 46"x11'6½"
C5 46"x11'6½"	C18 46"x13'5"	C31 46"x11'6½"
C4 46"x11'6½"	C17 46"x13'5"	C30 46"x11'6½"
C3 46"x11'6½"	C16 46"x13'5"	C29 46"x11'6½"
C2 34½"x11'6½"	C15 34½"x13'5"	C28 34½"x11'6½"
C1 46½"x11'6½"	C14 46½"x13'5"	C27 46½"x11'6½"

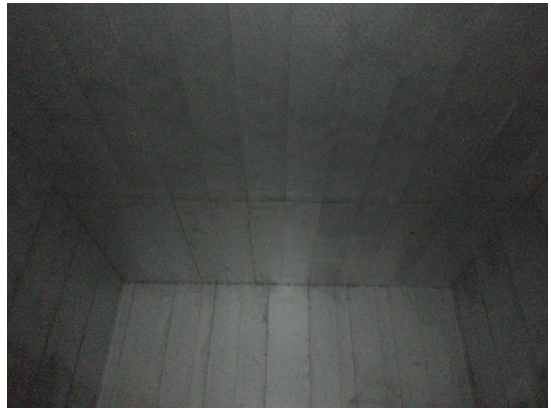
48ø

(1)6ø8ø  
Manual  
Sliding Door  
(3 piece frame)

(1)6ø8ø  
Manual  
Sliding Door  
(3 piece frame)

36'6" x 48' x 18'2" H  
Cooler or Freezer  
Ceiling Panels Diagram

120-2014  
Red  
Not drawn to scale.



**36'6" x 48' x 18'2" H  
Cooler or Freezer**

**120-2014  
Red**



**36'6" x 48' x 18'2" H  
Cooler or Freezer**

**120-2014  
Red**



**36'6" x 48' x 18'2" H**  
**Cooler or Freezer**

**120-2014**  
**Red**