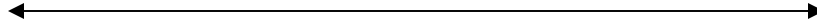
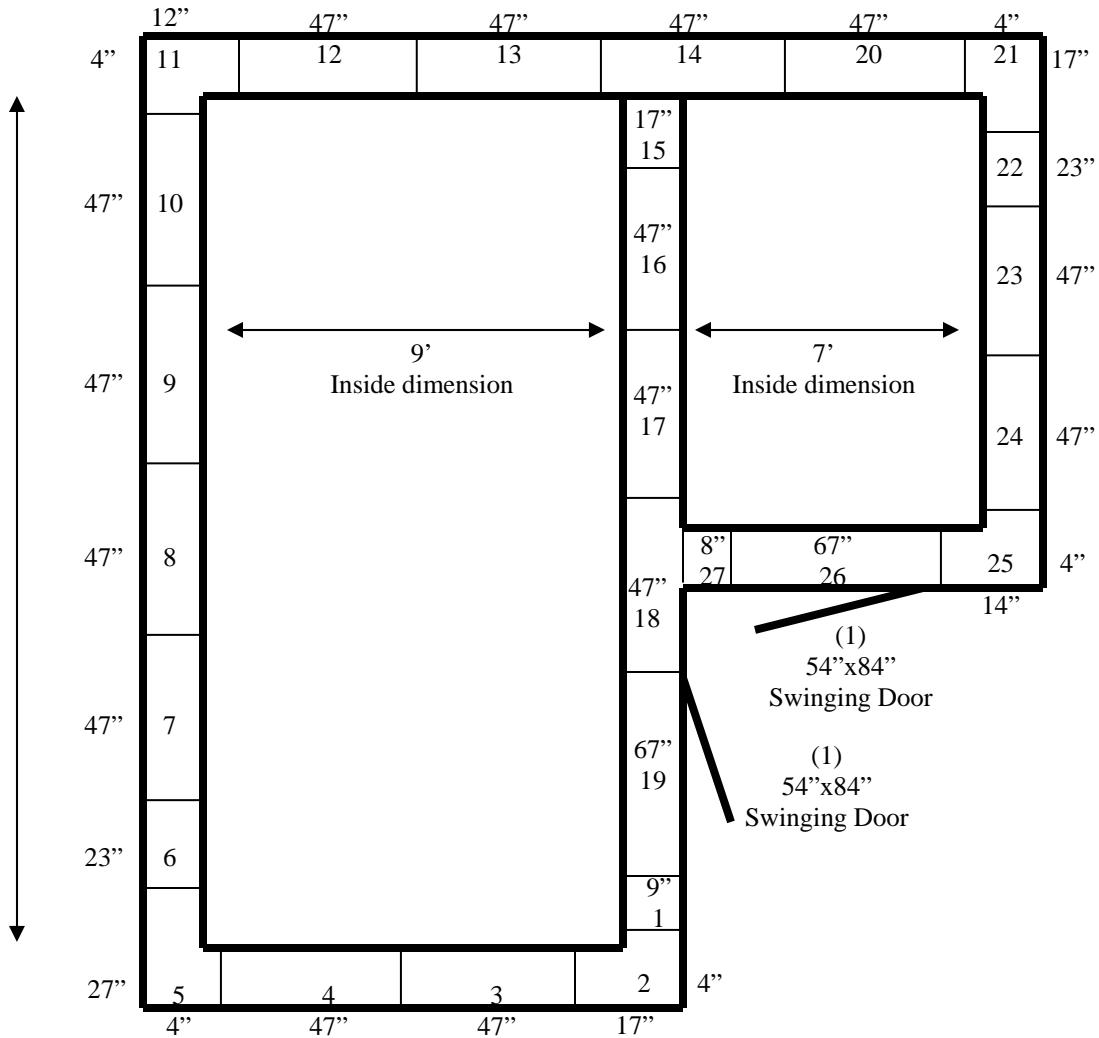




17'



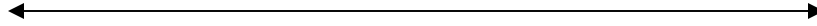
20'4"



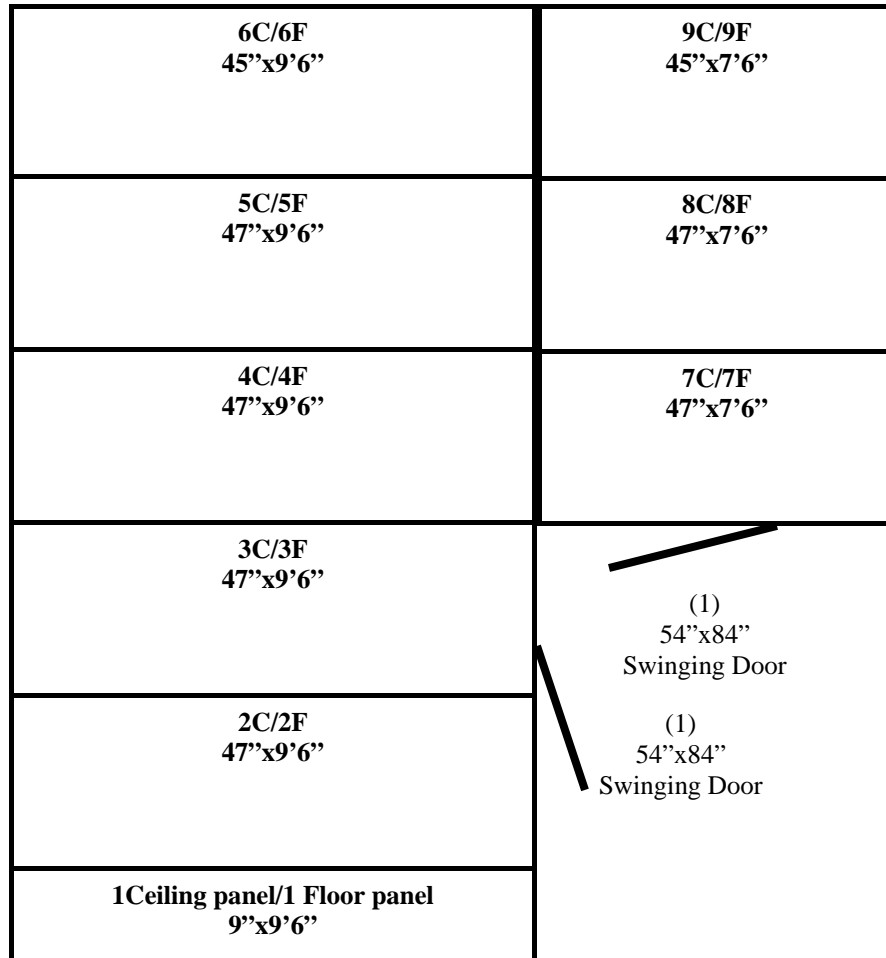
**17' x 20'4" x 8'9" H
Walk-In Combination Cooler or Freezer
Wall Panels Diagram**



17'



20'4"



Notes:

- * Ceiling & floor panels layout the same.
- * Ceiling lag bolts down to walls.

**17' x 20'4" x 8'9" H
Walk-In Combination Cooler or Freezer
Ceiling Panels Diagram**

135-13
No color



17' x 20'4" x 8'9" H
Walk-In Combination Cooler / Freezer

135-13
No color



17' x 20'4" x 8'9" H
Walk-In Combination Cooler / Freezer

135-13
No color