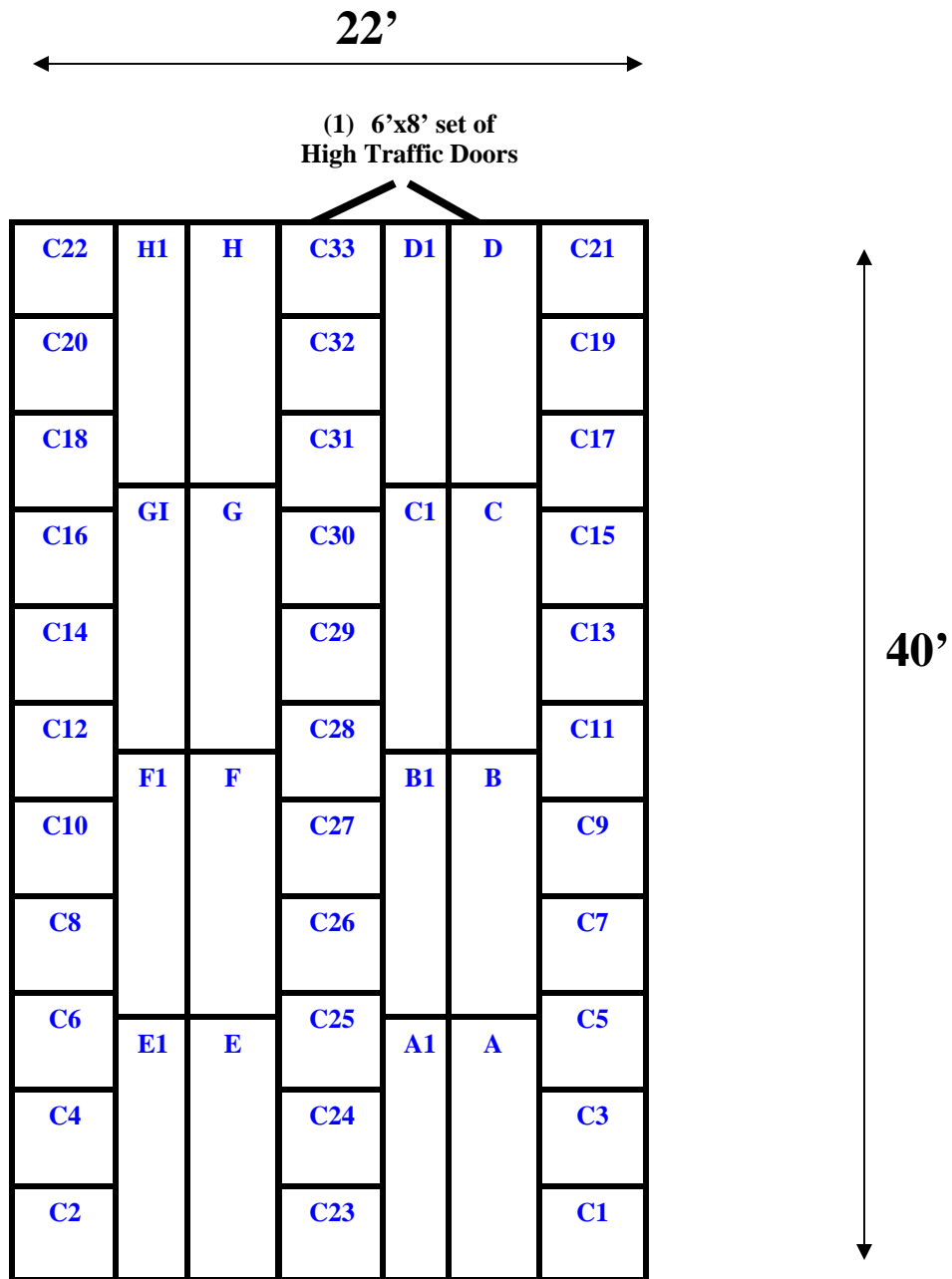


**22' x 40' x 15'/16' H
Walk-In Cooler or Freezer
Wall & Ceiling Panels Diagram**



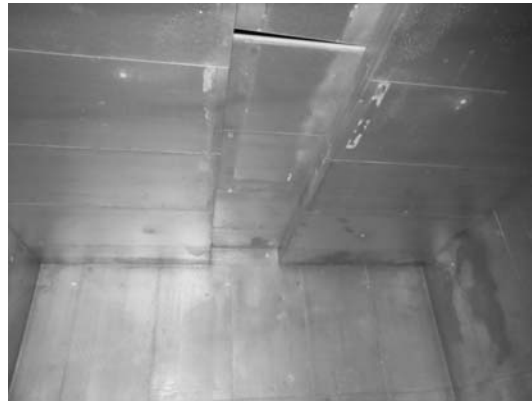
A1 thru H1 is a collar screwed to the top of the ceiling panel(C2 thru C22 and C1 thru C21).

A thru H is cammed to the collar.

Ceiling panels C23 thru C33 are cammed & lagged on top.

The Hangers are placed in between the collar & parts A thru H.

**22' x 40' x 15'/16' H
Walk-In Cooler or Freezer
Collar Panels Diagram**



22' x 40' x 15'/16'4" H
Drive-In Cooler or Freezer

14-2013
Red



22' x 40' x 15'/16'4" H
Drive-In Cooler or Freezer

14-2013
Red